

### 6.4 PARIS LE BOURGET (LBG)

DABS Le Bourget is a Line Station.

The **Station office** is located in the Airport of Paris le Bourget – (France).

**Address**      **DABS Le Bourget**  
 Batiment 362, Zone central, Aéroport du Bourget  
 93 350 Le Bourget - France  
[paris@dassault-business.com](mailto:paris@dassault-business.com)  
 Tel: +33 6 64 71 70 00  
 AOG: +351 210322824

#### 6.4.1 PERSONNEL

These personnel are nominated in regards to 145.A.30(b) and 145.A.30(g). These personnel are considered as authorised personnel in regards to 145.A.25(d).

##### 6.4.1.1 Management

###### Management

Stations & MCC Maintenance Director	Vasco ARAÚJO
VP Safety, Quality & Compliance	Thierry BARRE
Stations - Compliance monitoring Manager	Ines RODRIGUES

###### Personnel in Line station

Line Station Responsible	Fabrice BOUCKAERT
Technical services	Jasmine SAINT-PRIX
Certifying staff	Refer to DA-0103

##### 6.4.1.2 Support staff and certifying staff

Refer to DA-0103 for details of privilege.

Details of scope and validity are issued by the SQ department in Geneva.

**In case of unavailability of the B1 or B2 staff, certifying staff from Stations could be sent to the Line Station.**

##### 6.4.1.3 Additional staff

Refer to DA-0103.

## 6.4.2 SCOPE OF WORK

### 6.4.2.1 Rating

	Aircraft Model	Designation/ limitation	Eng.	DABS Farnborough	Base	Line
				Maintenance level – Limitation Limited up to and incl.		
A1	BD-100-1A10	Challenger 300	AS907	400H/6M	no	Yes*
		Challenger 350		800H/12M	no	Yes
	BD-700-1A10	Global Express	BR710	Monthly checks	no	Yes*
		Global XRS		750H/15M		Yes
		Global 6000		Monthly checks		Yes*
	BD-700-1A11	Global 6500	BR710	750H/15M	no	Yes
		Global 5000		Monthly checks		Yes*
		Global 5000GVFD		Monthly checks		Yes*
	CL-600-2B16 (CL-604 variant)	Challenger 604	CF34-3B	800H/12M	no	Yes
		Challenger 605		Monthly checks		Yes*
		Challenger 650		Monthly checks		Yes
	CL-600-2B19 (RJ Series 100)	Challenger 850	CF34RJ	Monthly checks	no	Yes
A2	Dassault	Falcon 7X	PW307A	800H/12M	no	Yes
		Falcon 8X	PW307D			
	Embraer	EMB-135BJ	AE3007A	250H/6M	no	Yes*
		EMB-505	PW535	800H/12M	no	Yes*
		Phenom 300	PW617	800H/12M		
		Phenom 100	PW617	800H/12M	no	Yes*
		Phenom 100	PW617	800H/12M		

\*Work could be performed on this Aircraft Type only if **maintenance data** is provided by the Customer or TC Holder before work (i.a.w. 145.A.45(a)). Tools, GSE, Support and Certifying Staff are available.

### Privileges include:

- Servicing / minor works / Troubleshooting / Rectification
- Maintenance works as described in limitation
- Minor repair and modification
- APU & Engines on wings Inspections and works

### Scope level includes Airframe, Engine and APU:

- **Due items** and **Limited scheduled maintenance works** from maintenance programme.
- Limitation for line maintenance event is work down time below **1 week and/or below 100 hours of man-hours**.
- **Form WAAS (DA-0141)** to be used for assessment in **case of work above described scope limitation**.  
NAA approval/acceptance is required.

### Approval Perimeter (other authorities)

Refer DA-0108.

### 6.4.2.2 Components

RATING	ATA Chapter	Work shop
* C5 Electrical Power & Lights	24 - 33	Electrical/Battery shop

**6.4.3 DOCUMENTATION**

Name	media
AMM	Web access
EMM	
APU MM	
Standard Practice Manual	
CMM *	

\* CMM access is limited to those products and activities specified in the Capability list. **(DA-0105)**

**6.4.4 (SUB)CONTRACTORS**

See Provider List **(DA-0104)** for approved:

- Subcontractor list
- Metrology provider list
- Contractor list

#### 6.4.5 HOUSING AND FACILITIES

The **Station office** is located in the located in the Airport of Paris le Bourget – (France).

Address is described page 6.6.1.

##### 6.4.5.1 General Situation



Offices + Hangar (362) & Technical Area

Part STATION - Chapter PARIS LE BOURGET (LBG)

### 6.4.5.2 General Description

#### Hangar (Bat 362) & Store & Shop

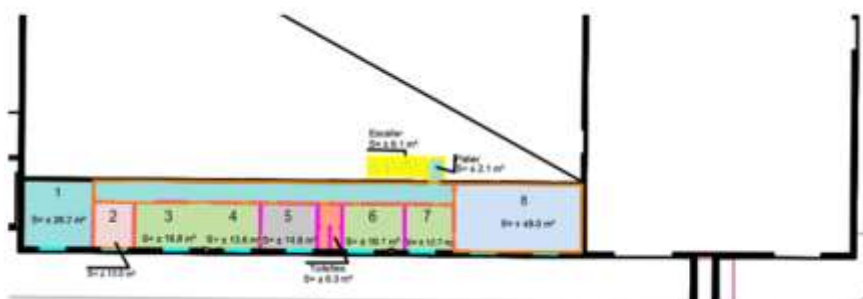


- 1 – Compressor
- 2 – Waste
- 3 – Subcontractor
- 4 – Toilet
- 5 – Entrance
- 6 – Laundry Room

- 7 – Technician's Locker Room
- 8 – Management Office
- 9 – Technician Office
- 10 – General Hangar Supplies
- 11 – Stores
- 12 – Quarantine Area

- 13 – Wheel Storage
- 14 – Tools and GSE
- 15 – Battery Shop 1
- 16 – Battery Shop 2
- 17 – Battery Storage

#### First floor Hangar (bat 362)



- 1 – Meeting Room
- 2 – IT and supplies
- 3 & 4 – Technical Services
- 5 – Administrative Office
- 6 – Station Manager Office
- 7 – Resting area
- 8 – Kitchen



Part STATION - Chapter PARIS LE BOURGET (LBG)

## 6.4.6 PICTURES

### 6.4.6.1 Hangar Area

#### Hangar (Bat 362)



Part STATION - Chapter PARIS LE BOURGET (LBG)

#### 6.4.6.2 Office



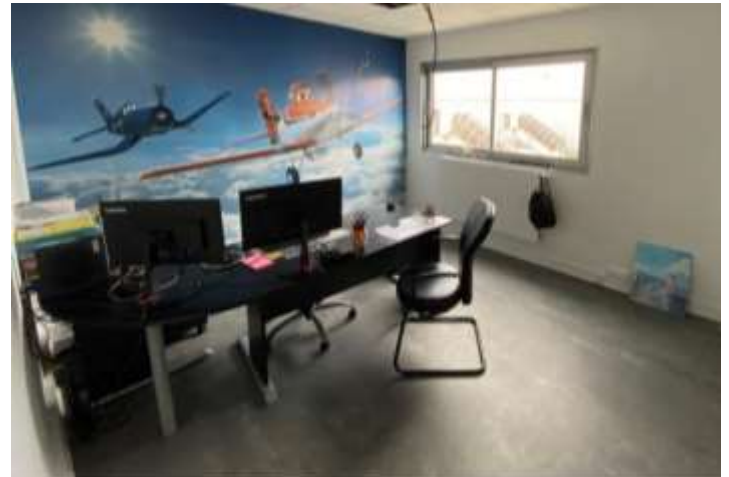
-Management Office(shop floor – #8)



- Technician Office (shop floor - #9)



-Technical services (1<sup>st</sup> floor - #3&4)



- Administrative Office (1<sup>st</sup> floor - #5)



- Resting area (1<sup>st</sup> floor - #7)



-Meeting room (1<sup>st</sup> floor - #1)



- Kitchen (1<sup>st</sup> floor - #8)



Part STATION - Chapter PARIS LE BOURGET (LBG)

### 6.4.6.3 Battery Shop



Lead acid



Nicad (shop floor - #16)



Tools



- Battery Storage (shop floor - #17)

#### 6.4.6.4 Tool & Equipment



Tools and GSE (shop floor - #14)

#### 6.4.6.5 Stores for Spare parts



*Incoming*



*Shipping*



*Spare parts*





*Wheel storage*



*Quarantine*



*Fluid/ Chemical*





Part STATION - Chapter PARIS LE BOURGET (LBG)

#### 6.4.6.6 Ground support Equipment

