

6.5 CLERMONT FERRAND (CFE)

DABS CFE is a line Station.

The **Station office** is located in the Airport of Clermont Ferrand – (France).

Address DABS CFE
Hangar NEF 4, Aéroport Clermont Ferrand
11 rue Marie Marvingt
63100 Clermont-Ferrand, France
clermont-ferrand@dassault-business.com
T. +351 210 322 824

The Hangar is the Michelin Hangar.

The office is located within the facilities of CFE airport with restricted access and required means and equipment to perform the works specified in § 6.4.2.

The Office is located in Michelin Hangar. Office is organised as follows:

- Office area with computer equipment, phone, scanner necessary for consulting technical documents and to do administrative work. The computer is set up to have access to DABS's servers. DABS IT department makes a daily backup of all the information stored in its servers.
- An additional store areas (Tools/store/chemical) are located in the hangar. Room are climate controlled and secured. Cabinets are properly identified for storage of components, consumables and tools.

6.5.1 PERSONNEL

These personnel are nominated in regards to 145.A.30(b) and 145.A.30(g). These personnel is considered as authorised personnel in regards to 145.A.25(d).

6.5.1.1 Management

Management

Stations & MCC Maintenance Director	Vasco ARAÚJO
VP Safety, Quality & Compliance	Thierry BARRE*
Stations - Compliance monitoring Manager	Ines RODRIGUES

Personnel in Line station

Line Station Responsible	Samuel BRISSON
Certifying staff	Refer to DA-0103

6.5.1.2 Support staff and certifying staff

Refer to DA-0103 for details of privilege

Details of scope and validity are issued by the **SQ department**.

In case of unavailability of the B1 or B2 staff, certifying staff could be sent to the Line Station.

6.5.1.3 Additional staff

Refer to DA-0103

6.5.2 SCOPE OF WORK

6.5.2.1 Rating

A1	Model	Designation/ limitation	Eng.	DABS CFE	Base	Line
				Maintenance level – Limitation Limited up to and incl.		
Dassault	Falcon 2000EX	Falcon 2000 EX	PW308C		no	no
	Falcon 2000EX	F2000EX EASy	PW308C	12M-800H	no	Yes
		F2000DX				
		F2000LX				
		F2000LXS				
		F2000S				

Privileges include:

- Servicing / minor works / Troubleshooting / Rectification
- maintenance works as described in limitation
- Minor repair and modification
- APU & Engines on wings Inspections and works

Scope level includes Airframe, Engine and APU:

- **Due items** and **Limited scheduled maintenance works** from maintenance programme.
- Limitation for line maintenance event is work down time below **1 week and/or below 100 hours of man-hours**.
- **Form WAAS (DA-0141)** to be used for assessment in **case of work above described scope limitation**.
NAA approval/acceptance is required.

Approval Perimeter (Other authorities)

Refer DA-0108.

6.5.2.2 Components

N/A

6.5.3 DOCUMENTATION

Name	media
AMM	Local Internal server Web access
EMM	
APU MM	
Standard Practice Manual	

6.5.4 (SUB)CONTRACTORS

See Provider List (DA-0104) for approved:

- Subcontractor list
- Metrology provider list
- Contractor list

6.5.5 HOUSING AND FACILITIES

The **Station office** is located in the Airport of Clermont Ferrand – (FRANCE).

Address is described page 6-1.1.

The facilities are the property of Michelin Air Services. Facilities and equipment dedicated to DABS are identified with a DABS sticker.

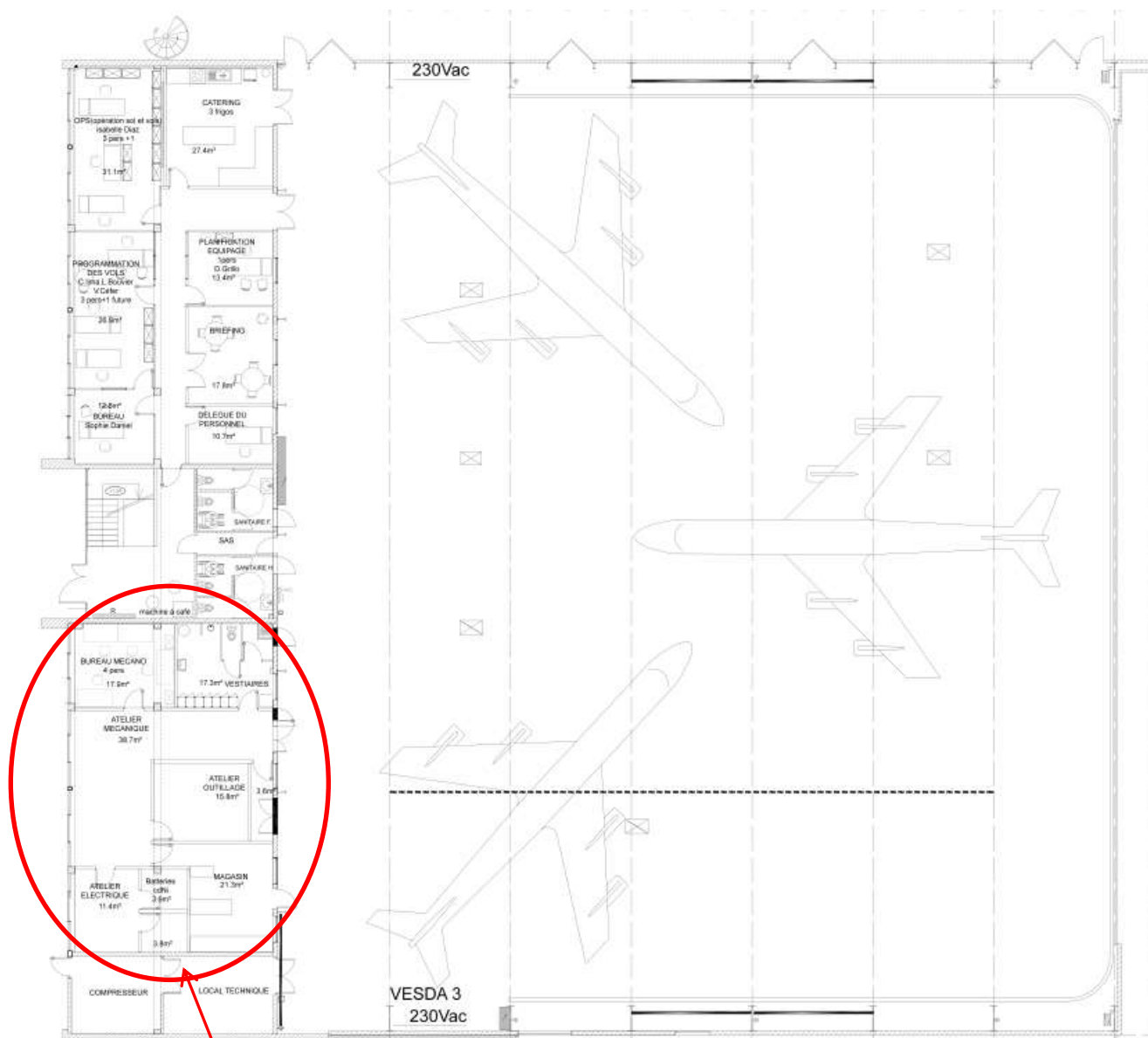
6.5.5.1 General Situation



Office + Technical area

Hangar

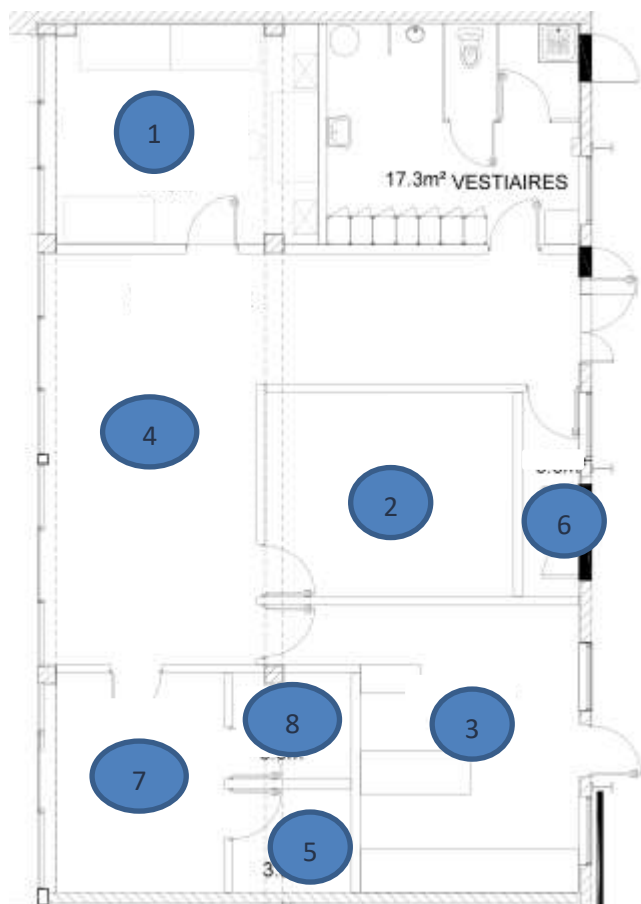
6.5.5.2 Description of hangar



Office + Technical area

Description	Floor space (m2)
General Office (maintenance)	140
Hangar	1800

6.5.5.3 Office & Technical Area



Description		Floor space (m2)
Area / Store house		
1	Technical office	18 m2
2	Store for Parts	16 m2
3	Tools Shop	20 m2
4	Mechanical/Electrical Shop	50 m2
5	Store for Oil, Grease and ingredient	4 m2
6	Area for Quarantine	4 m2
7	Meeting room	15 m2
8	Closet (not aeronautical)	4m2

6.5.6 PICTURES

6.5.6.1 Hangar Area



Part STATION - Chapter CLERMONT FERRAND (CFE)

6.5.6.2 Office



6.5.6.3 Mechanical/Electrical Shop



6.5.6.4 Incoming inspection and shipping



6.5.6.5 Meeting room



Part STATION - Chapter CLERMONT FERRAND (CFE)

6.5.6.6 Tool & Equipment



Part STATION - Chapter CLERMONT FERRAND (CFE)

6.5.6.7 Store - Spare parts



Part STATION - Chapter CLERMONT FERRAND (CFE)

6.5.6.8 Ingredient Room



6.5.6.9 Servicing



Part STATION - Chapter CLERMONT FERRAND (CFE)

6.5.6.10 Ground Support Equipment

