

10.4 APPENDIX C – BASEL BSL FACILITY

Additional fixed locations Sub-Base Station Limited	Switzerland	DABS Basel BSL South West Maintenance Area Flughafen Basel Mulhouse Postfach CH 4030 BASEL Phone: +351 210 322 824	BSL
--	-------------	---	------------

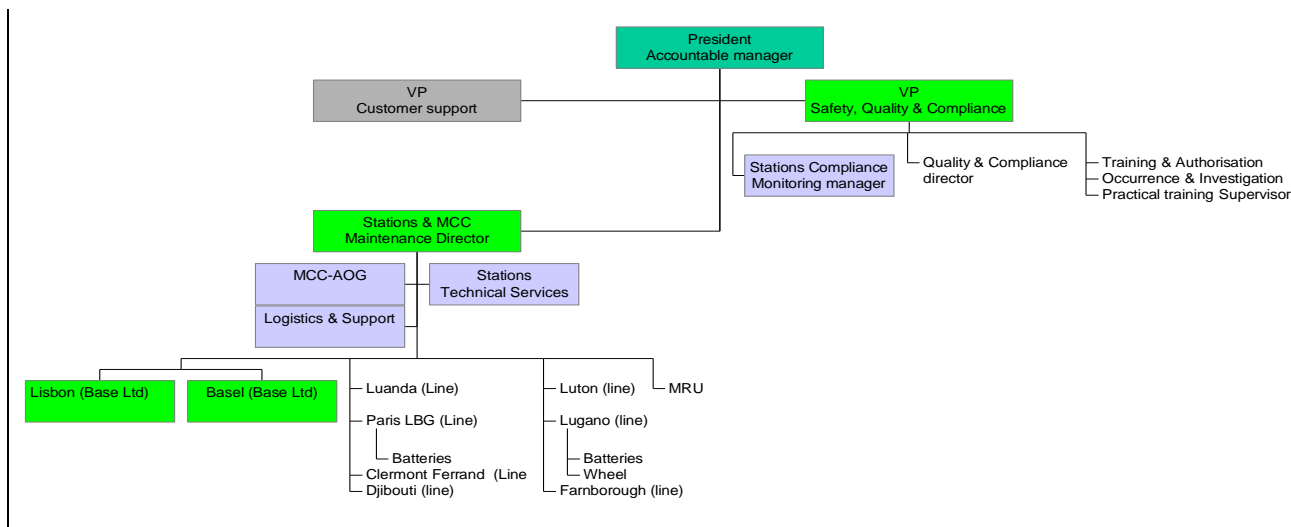
10.4 APPENDIX C – BASEL BSL FACILITY

10.4-1

10.4.1	ORGANISATION CHART	10.4-1
10.4.2	MAINTENANCE PERSONNEL	10.4-1
10.4.3	MAINTENANCE PROVIDERS	10.4-2
10.4.3.1	Maintenance works	10.4-2
10.4.3.2	Services	10.4-2
10.4.4	BASEL BSL FACILITIES	10.4-1
10.4.4.1	General	10.4-1
10.4.4.2	Facilities location	10.4-1
10.4.4.3	Hangars & Technical Area	10.4-2
10.4.4.4	10.4-2	
10.4.4.5	Offices	10.4-3
10.4.5	PICTURES	10.4-4
10.4.5.1	Hangar Area	10.4-4
10.4.5.2	Office	10.4-5
10.4.5.3	Store	10.4-6
10.4.5.4	Ground Support Equipment	10.4-8

Ed-Rev.	Issued Date	Details
Ed. P-0	1 May 2023	New Appendix Basel becomes Base Limited (previously Line)
Ed. R-0	1 December 2023	Organigramme updated Pictures updated
Ed. S-0	10 January 2024	6.4.1 – Chart update 6.4.2 – Maintenance Personnel update
Ed. T-0	1 May 2024	Organigramme updated Renumbering
Ed. AA-0	9 September 2024	Renumbering Organigramme updated

10.4.1 ORGANISATION CHART



10.4.2 MAINTENANCE PERSONNEL

Management

Stations & MCC Maintenance Director	Vasco ARAÚJO*
VP Safety, Quality & Compliance	Thierry BARRE*
Quality & Compliance director	Stephane BUCHS
Stations - Compliance monitoring Manager	Ines RODRIGUES

Personnel in Station

Personnel in Station

Local Station Responsible	Sebastien BELS
Technical Services	Staff will be appointed for base maintenance events
Tools	Sebastien BELS
Certifying staff	Refer to DA-0103

In case of unavailability of the B1 or B2 or C staff, certifying staff from base facilities could be sent to the Station.

10.4.3 MAINTENANCE PROVIDERS

10.4.3.1 Maintenance works

Type	Name	EASA
Interiors works	DABS Geneva	CH.145.0248
Aircraft cleaning (interiors and exterior	JETCLEAN	-
Painting	DABS Geneva	CH.145.0248
Batteries	Nomad	CH.145.0386
Wheels	DABS Geneva/Antavia/Jet Aviation Basel	CH.145.0248
Equipment (<i>hydraulics, fuel systems, electro mechanics</i>)	DABS Geneva/DAFS	CH.145.0248

Refer to DA-0104

10.4.3.2 Services

Type	Name
Ground support equipment	ASB
Towing	ASB
Cleaning	JETCLEAN
Toilet servicing	ASB
Oxygen servicing	ASB
Metrology - Tool calibration	DABS Geneva

10.4.4 BASEL BSL FACILITIES

10.4.4.1 General

DABS BSL is a **base station as additional fixed Location**.

The **Station office** is located in the Airport of Basel – South Gate – (Switzerland).

DABS Basel

South West Maintenance Area

Flughafen Basel Mulhouse

Postfach CH 4030 BASEL

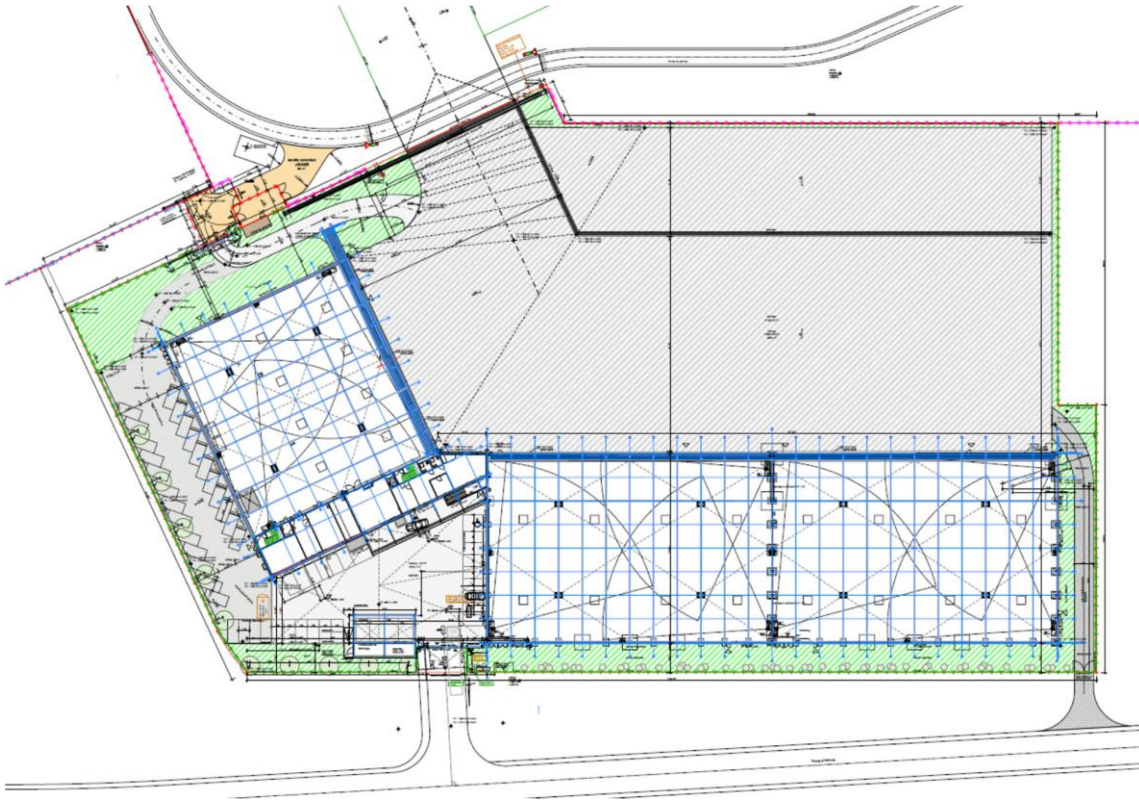
10.4.4.2 Facilities location



Air Service
Basel - ASB

10.4.4.3 Hangars & Technical Area

10.4.4.4



Maintenance Hangar, Airport of Basel

- Width x Depth (external): 45.0 x 42.7 m
- Width x Depth (internal): 44.1 x 40.0 m
- Area (internal): 1760 m²
- Height (internal): 9.5 m
- Max. height of gate: 12.9 m
- Max. width of gate (per hangar): 39.5 m
- Height of hangar (external): 17.2 m

DABS Area

10.4.4.5 Offices

2 Offices: one is located in the Shop floor and another office located on the 1st floor.

Office in the Shop Floor:



Office in the 1st floor:



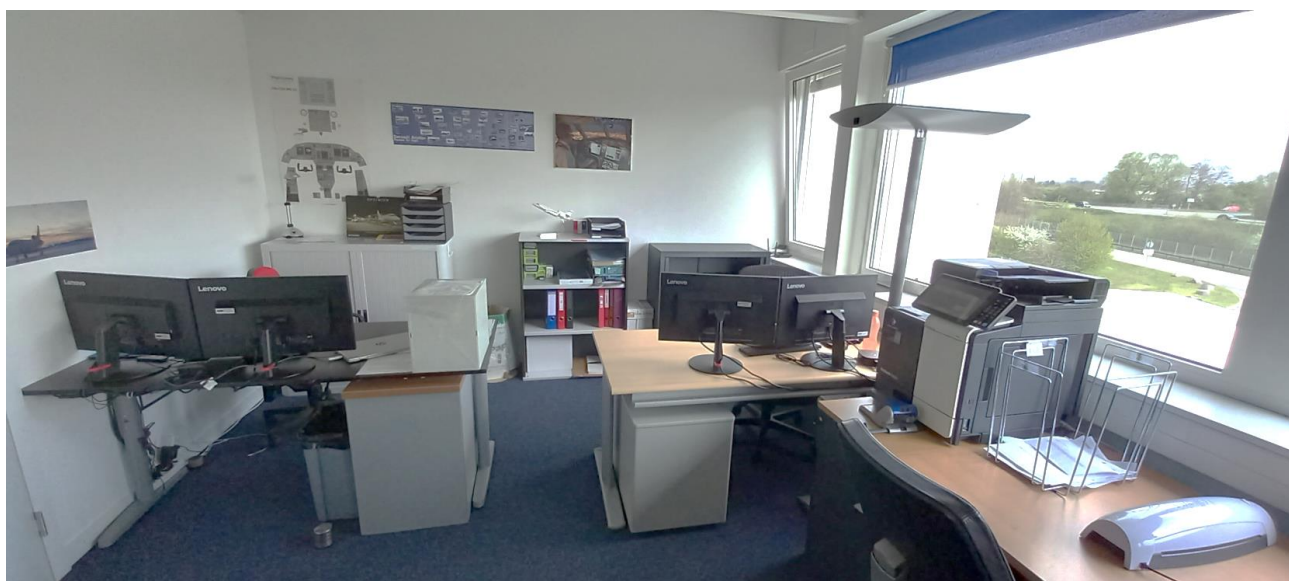
10.4.5 PICTURES

10.4.5.1 Hangar Area



10.4.5.2 Office

10.4.5.2.1 1st floor



10.4.5.3 Store

10.4.5.3.1 Stores for Part



Incoming area



Parts segregation:



10.4.5.3.2 Tools Store:



Hangar Consumables cabinet



10.4.5.4 Ground Support Equipment

